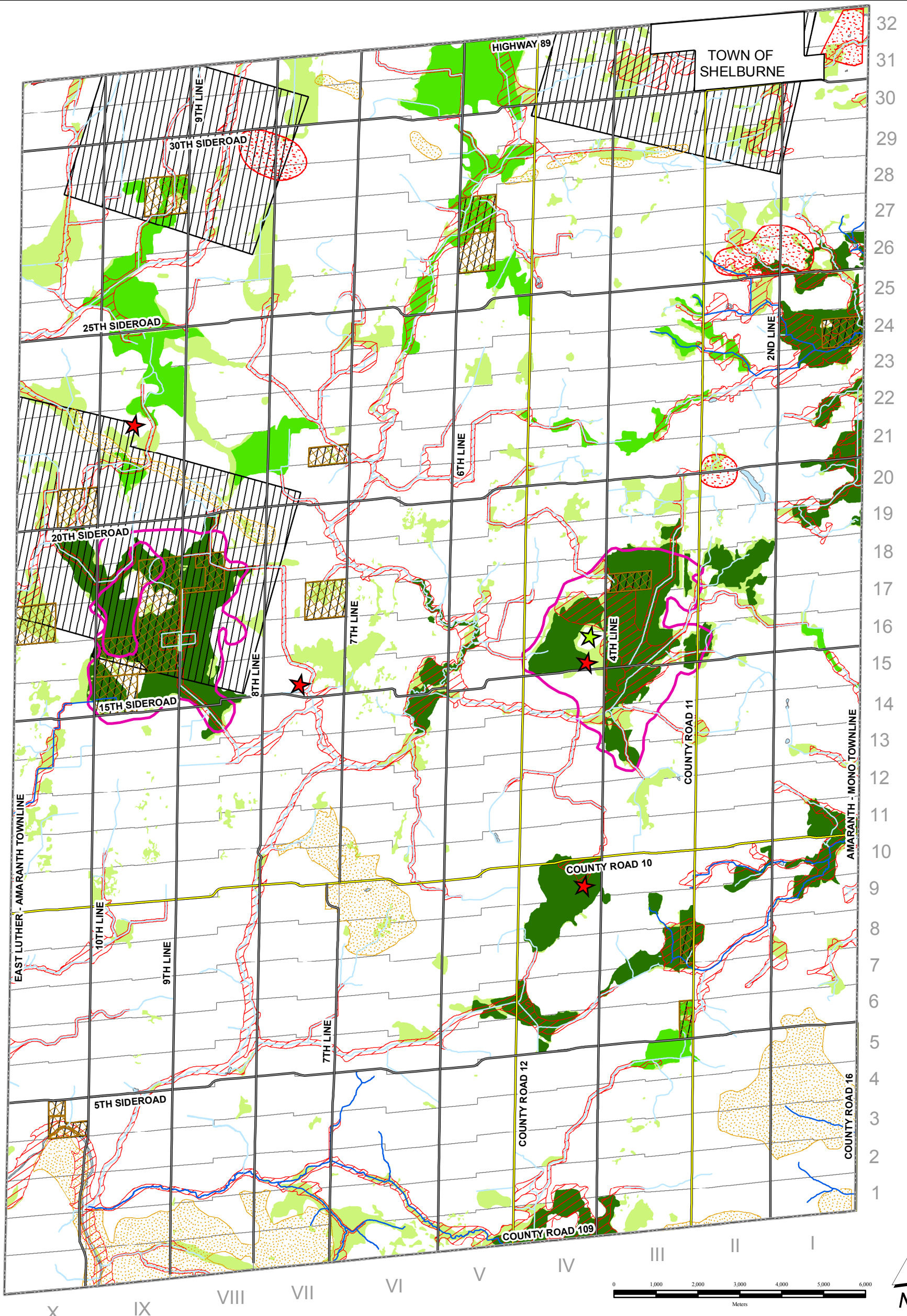


**TOWNSHIP OF AMARANTH OFFICIAL PLAN
DUFFERIN COUNTY
SCHEDULE "B" ENVIRONMENTAL FEATURES**



Legend

- | | | |
|----------------------------------|---------------------|------------------------------------|
| Provincially Significant Wetland | Significant Forest | High Potential Aggregate Resources |
| Locally Significant Wetland | Significant Habitat | Vulnerable Aquifer |
| Wetland | Deer Yard | Waste Site - Active |
| Floodplain | Water Feature | Waste Site - Closed |
| | Coldwater Stream | |

Township of Amaranth - Official Plan Consolidation
September 2010

Note: Schedule "B" is revised with respect to the approved Official Plan Amendments (OPA 1 - 3).

Map Projection: NAD 83, UTM Zone 17

This Map is Not A Legal Survey.
The Township Cannot Be Responsible for Errors, Omissions or Other Inaccuracies.

Lot Fabric Created With Data Provided By Teranet Inc.
Official Plan Data updated by R.J. Burnside & Associates Ltd.

