

AGRICULTURAL LANDS

AGRICULTURAL LANDS

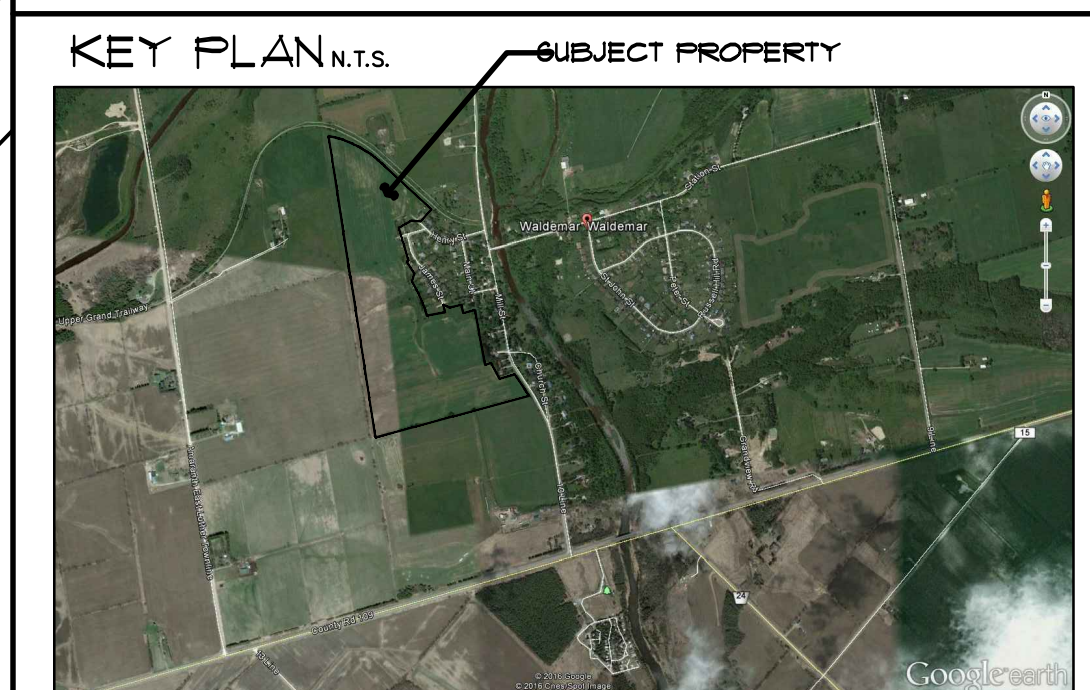
6m WIDE SERVING EASEMENT Block 280 218.0 S.M.

6m WIDE SERVING EASEMENT Block 289 368.0 S.M.

PART 2, TR-1023

DRAFT PLAN OF SUBDIVISION

1 EVANS AVE. and 9 MILL ST.
PART OF LOTS 2 AND 3, CONCESSION 10 REGISTERED PLAN 4A
WALDMAR TOWNSHIP OF AMARANATH COUNTY OF DUFFERIN



PLANNING APPROVAL
APPROVED UNDER SECTION 51 OF THE PLANNING ACT, RSO 1990, AS AMENDED, BY THE DIRECTOR OF PLANNING AND DEVELOPMENT FOR THE TOWNSHIP OF AMARANATH

SIGNED: _____ THIS _____ DAY OF _____, 2016
DIRECTOR OF PLANNING AND DEVELOPMENT

OWNER'S CERTIFICATE
I HEREBY CONSENT TO THE FILING OF THIS DRAFT PLAN BY ZELINKA PRIMO PLANNING CONSULTANTS

SURVEYOR'S CERTIFICATE
I HEREBY CERTIFY THAT THE BOUNDARY OF THE LAND ON THIS PLAN AND THEIR RELATIONSHIP TO THE ADJACENT LAND ARE ACCURATELY AND CORRECTLY SHOWN

ADDITIONAL INFORMATION REQUIRED UNDER SECTION 5(1)(7) OF THE PLANNING ACT (R.S.O. 1990, P.13 AS AMENDED)
INFORMATION REQUIRED BY CLAUSES A, B, C, D, E, F, G, J, L ARE SHOWN ON THE DRAFT AND KEY PLAN

H - MUNICIPAL WATER
I - CLAYEY SILT TILL
K - WATER AND WASTE WATER

LAND USE STATISTICS

LOTS/BLOCKS	LAND USE	AREA	NUMBER OF LOTS
LOTS 1 TO 334	SINGLE DETACHED	25.9 ha.	107
BLOCK 282	SEPTIC SYSTEM	0.1213 ha.	1
BLOCK 283	RESERVE ASSOCIATED WITH PLAN 330		
BLOCK 284	RESERVE ASSOCIATED WITH PLAN 330		
BLOCK 285	RESERVE ASSOCIATED WITH PLAN 330		
BLOCK 286	RESERVE ASSOCIATED WITH PLAN 330		
BLOCK 287	SM. PUMPING STATION	0.0384 ha.	1
BLOCK 288	WALKWAY/SERVING	0.0363 ha.	1
BLOCK 289	SERVING EASEMENT	0.0368 ha.	1
BLOCK 290	SERVING EASEMENT	0.0218 ha.	1
BLOCK 291	PROPOSED PARK	8.0555 ha.	1
BLOCKS 292-300	RESIDENTIAL RESERVE BLOCKS		
ROADS		8.9836 ha.	
TOTAL		35.021 ha.	

Zelinka Primo Ltd.
LONDON OFFICE, 318 WELLINGTON ROAD, LONDON, ON N6C 4P4
PHONE +1 (519) 474-7137 www.zplon.com

REVISIONS

AUG. 5 - 2015	
MAY 21 - 2016	
JUNE 10 - 2016	
JUNE 28 - 2016	
AUG. 12 - 2016	
AUG. 29 - 2016	

SCALE 1:1000

NOTES:
ALL DIMENSIONS IN METRES UNLESS OTHERWISE NOTED.
CONCEPT BASED ON PRELIMINARY SURVEY PLAN DATED OCTOBER 9, 2013
PREPARED BY VAN HARTEN SURVEYING INC.

AGRICULTURAL LANDS

AGRICULTURAL LANDS

RESIDENTIAL LANDS

RESIDENTIAL LANDS

BLOCK 2 PLAN

BLOCK 1 4A

BLOCK 3 REGISTERED

Septic Block 1,228.0 S.M.

RESIDENTIAL RESERVE BLOCKS

LANDS OWNED BY OTHERS

EXISTING WELL PUMP BUILDING

PROPOSED PARK 8,055.29 S.M. Block 291

8.5m WIDE WALKWAY / STORM WATER Block 288 363.0 S.M.

CONCESSION 10
LOT 1
AGRICULTURAL LANDS

R=223.110
A=58.340
C=38.293
N78°38'35"W

R=424.400
A=70.433
C=20.431
N33°20'10"W

