



Getting to Know:

**Dufferin Rural Water  
Quality Program**



# Climate Action in Dufferin

## Who We Are

The County of Dufferin's official climate action initiative.

## Our Role

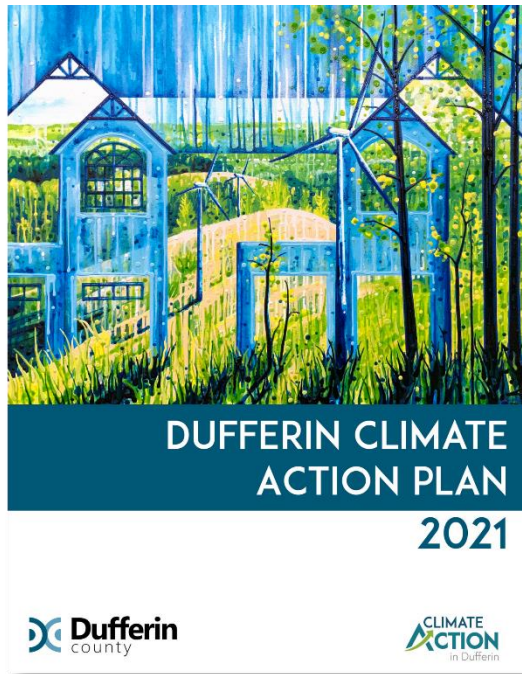
Implement the *Dufferin Climate Action Plan*, a strategy to co-create a net-zero and climate resilient future with and for the Dufferin community.



# Dufferin Climate Action Plan

**On March 11, 2021 Dufferin County Council unanimously adopted the *Dufferin Climate Action Plan*.**

The vision of the *Dufferin Climate Action Plan* is to create a net-zero and resilient community for current and future generations in Dufferin County.



## Dufferin Climate Action Plan & the Dufferin Rural Water Quality Program in Alignment

One of the ways climate change manifests is through changes in the water cycle.

We can reduce vulnerability and build climate resilience by protecting our water through adopting water management practices, like those as part of the Dufferin Rural Water Quality Program.



# Dufferin Rural Water Quality Program

## In Alignment

Taking on the projects in the Dufferin Rural Quality Program can also help build healthy soils and biodiverse ecosystems.

- Healthy soils can better pull out and stores carbon dioxide from the atmosphere
- Healthy and biodiverse ecosystems are resilient to the effects of climate change.

# You don't need to be a scientist to talk about climate change.

Share your climate story to help give others a deeper understanding of how climate change is impacting life in Dufferin and inspire hope for change.

**What in your local environment or community is special to you and why?**

**How does climate change threaten the people and places you care about?**

**How are you taking action on climate change?**

Submit your climate story at  
[dufferinmuseum.com/climate-stories/](https://dufferinmuseum.com/climate-stories/)



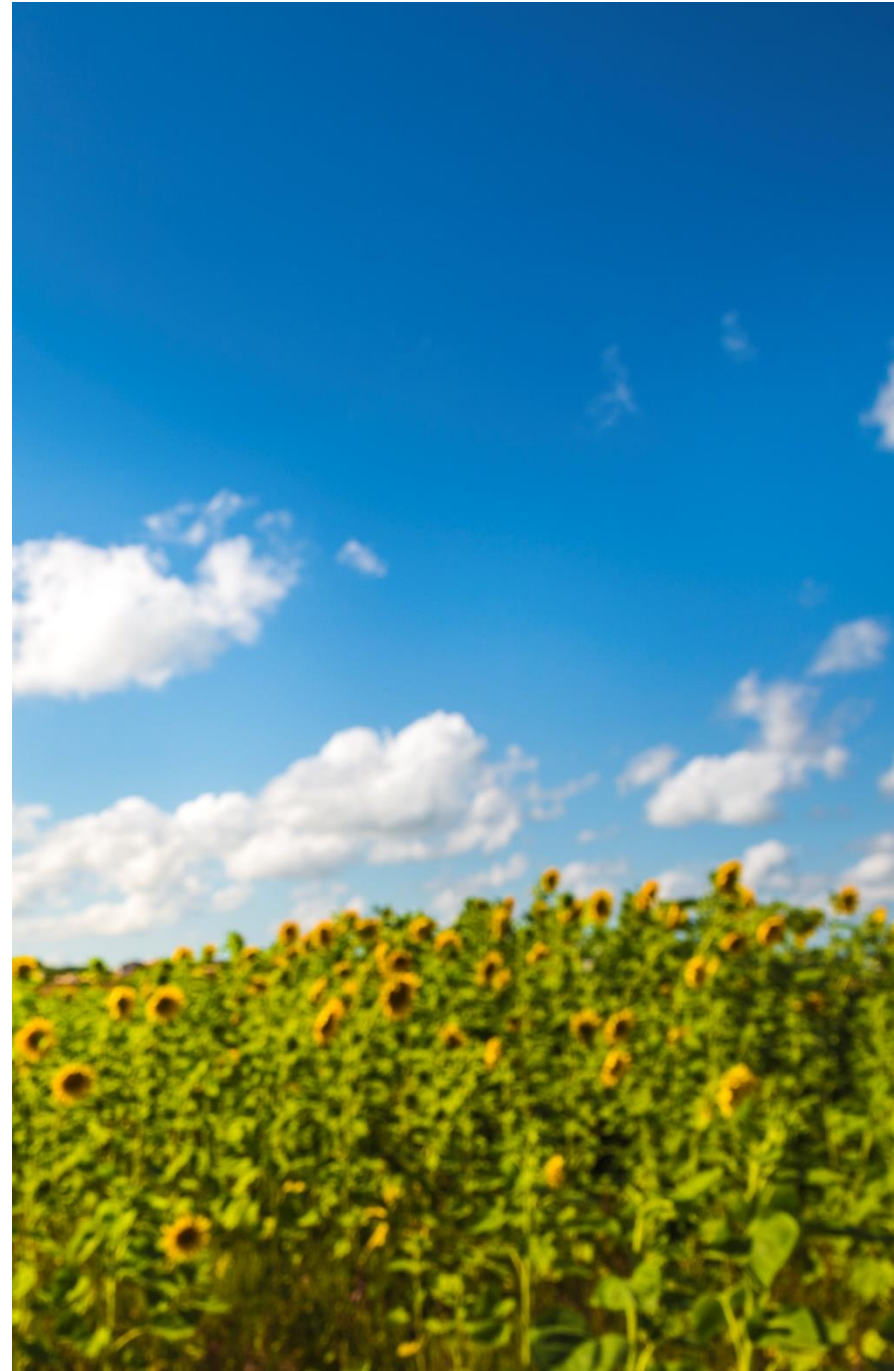
# Stay Connected



**@climateactionindufferin**



**[dufferincounty.ca/climatechange](http://dufferincounty.ca/climatechange)**



# Dufferin Rural Water Quality Program



Sep 15 2021

Anne Loeffler, Conservation Specialist



# Quick Polls





# Rural Water Quality Program



- Offer financial and technical assistance to farmers to implement best practices to benefit water quality
- Addressing agricultural sources of sediment and nutrient pollution

# Rural Water Quality Program



- Protect municipal drinking water sources
- Share the cost of clean water
- Protect and improve water at source

**It's a win/win situation!**



# Rural Water Quality Program

A wide-angle photograph of a rural landscape. In the background, a red barn with a white roof and a silver silo are visible. The middle ground is a large field of green and brown vegetation, possibly a cover crop or a field in transition. A single orange marker is visible in the field. The sky is blue with scattered white clouds.

**Helping producers go  
above & beyond minimum  
standards**

# Dufferin RWQP



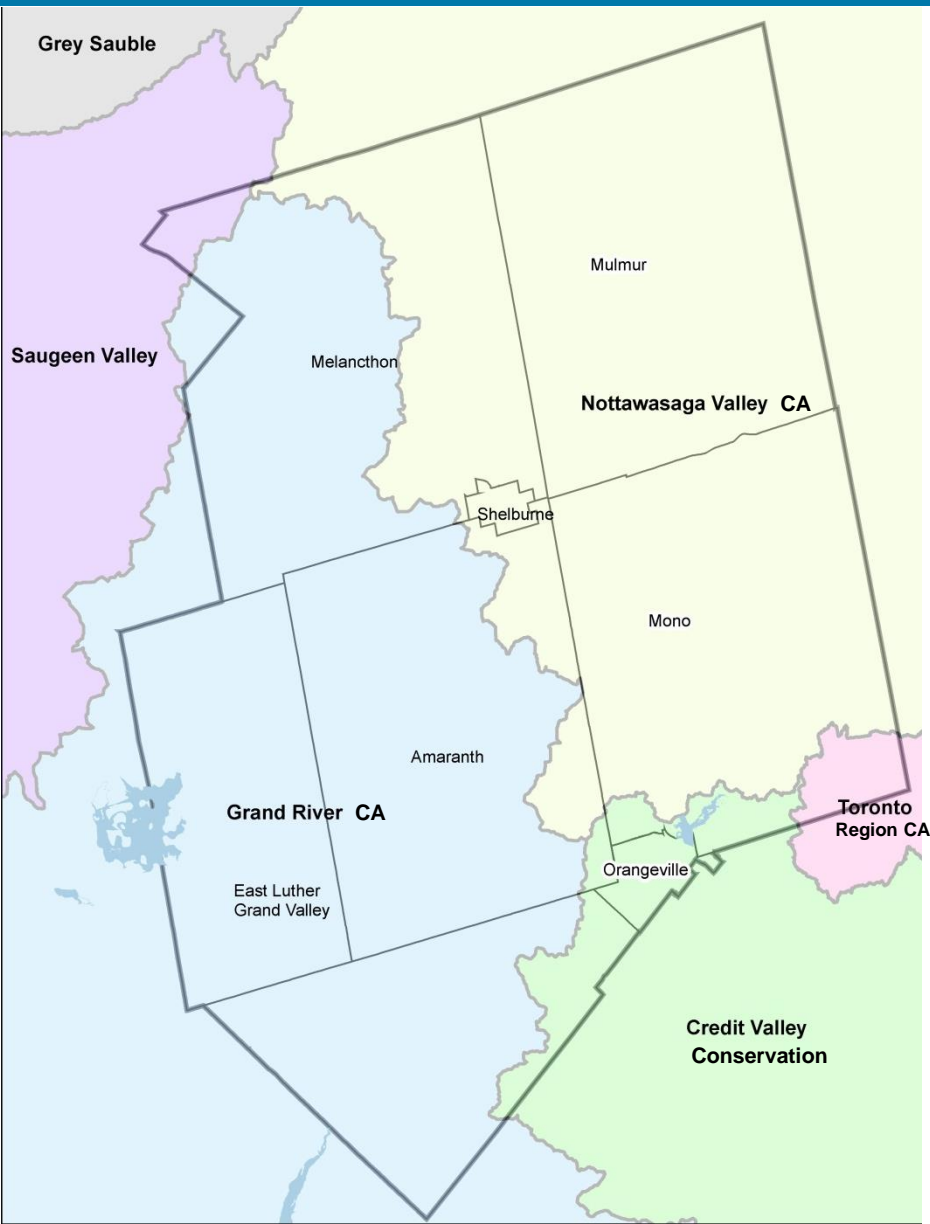
- In 2012, Dufferin County made \$50,000 contribution
- Since 2017, the County has committed \$20,000 annually
- Subject to annual budget approval
- Administered by Grand River Conservation Authority, delivered by local conservation authority throughout the entire county

# RWQP Delivery Model



- Locally developed to address local needs
- Funding decisions made by local review committee with municipal and agricultural industry representation

# Delivery Model



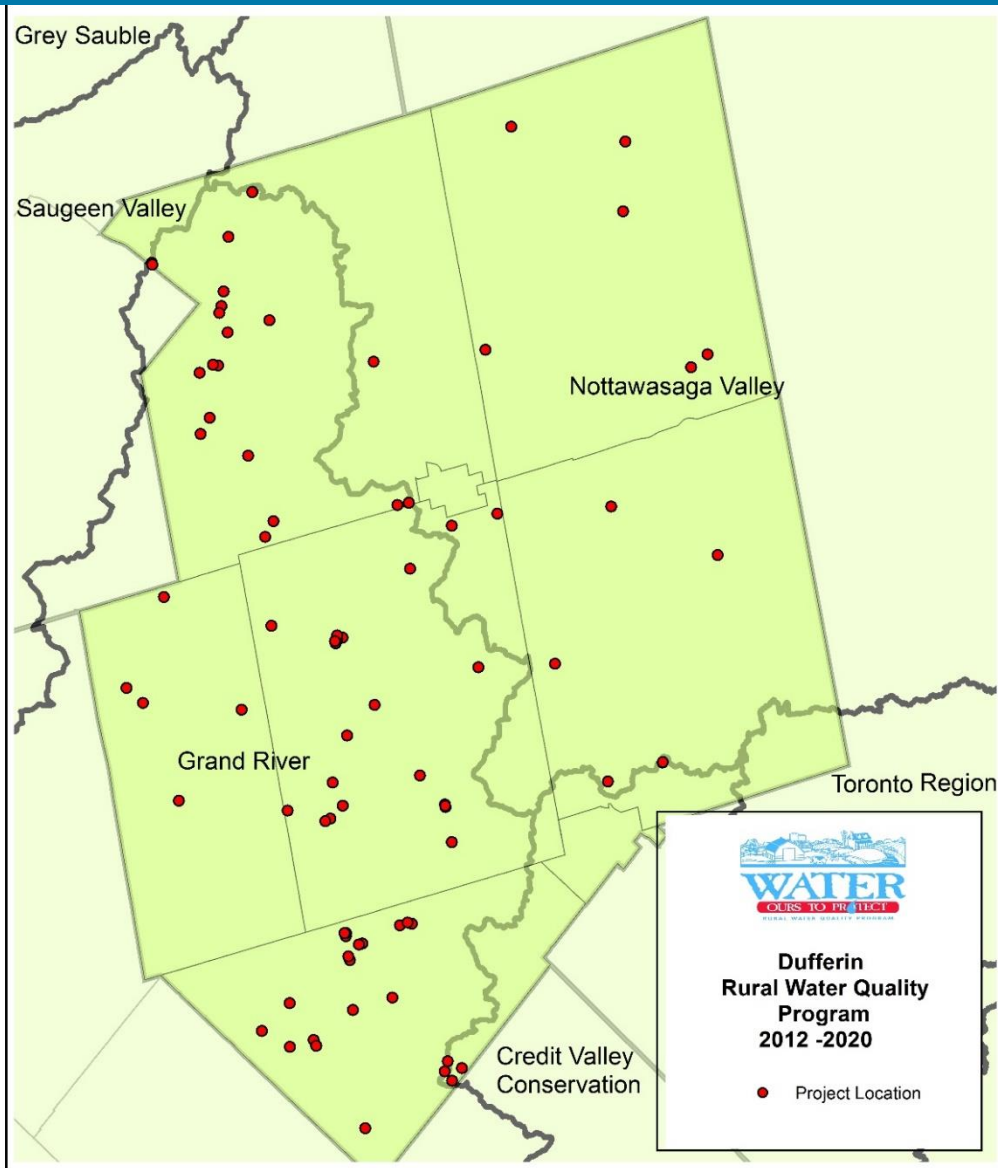
- Delivered by local Conservation Authority staff
- Conservation Authorities contribute staff and delivery costs

# Voluntary Participation





# Dufferin RWQP Project stats



## As of Sep 7/21:

- 95 projects completed
- Over \$247,000 in grant paid to producers
- Capital value over \$400,000

# Dufferin RWQP



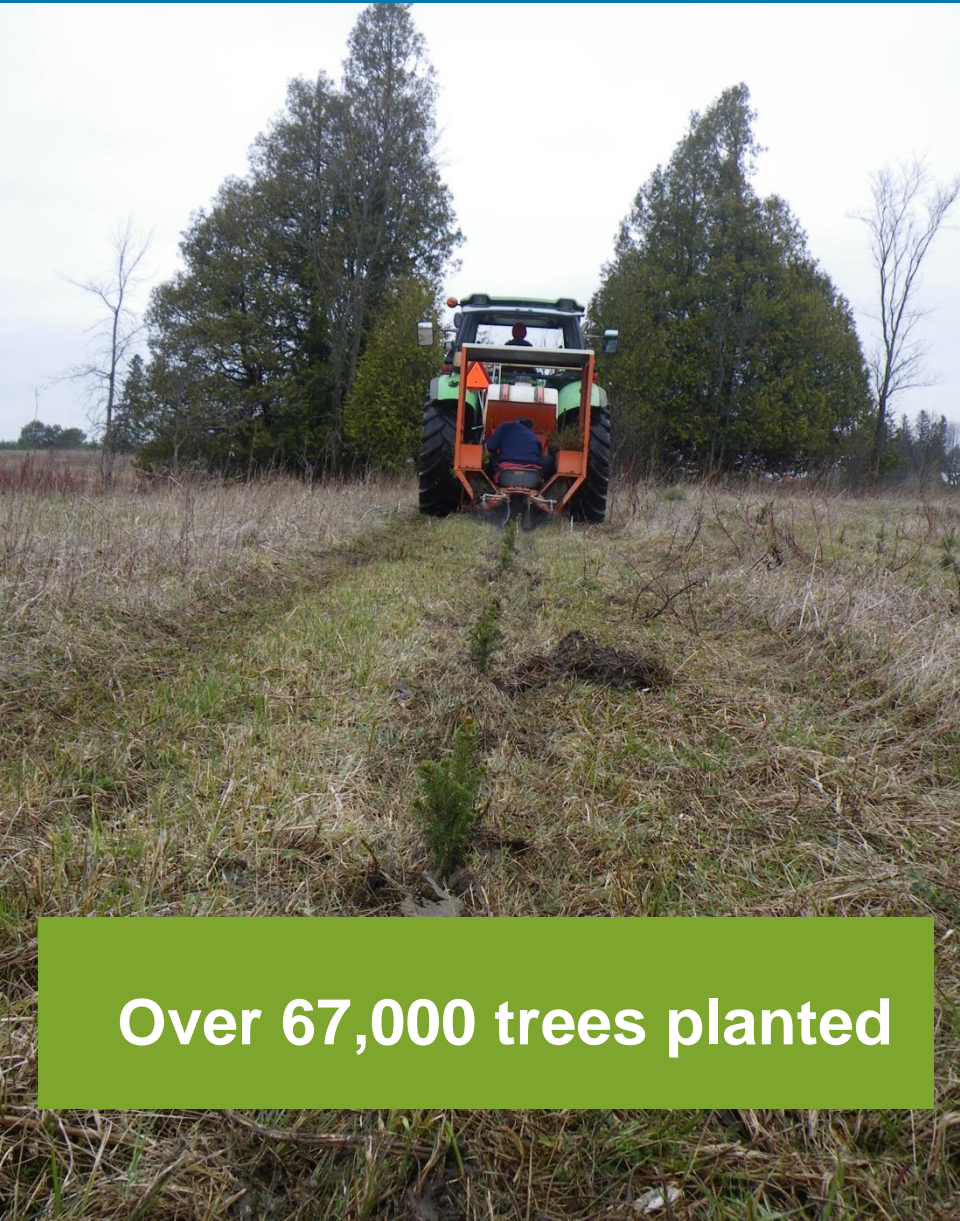
- Grant rates range from 50% to 100%
- An Environmental Farm Plan is required to participate

# Eligible Projects

- Livestock Fencing
- Clean Water Diversion
- Erosion Control Structures
- Tree Planting
- Plugging unused wells
- Well upgrades
- Cover Crops
- Nutrient Management Planning/Crop Nutrient Plans
- Wetland Creation
- Innovative Technologies



# Tree Planting



Over 67,000 trees planted

- The goal is to build resilience in the rural landscape
- RWQP offers 75% cost share

## **Dufferin RWQP has supported:**

- Total planting area 99 ac
- About 10 km of windbreaks and stream buffers

# Field Windbreaks

- 
- Field windbreaks protect soils from erosion and benefit crop yields

**75% grant up to \$5,000**

# Block Planting



# Riparian Buffers



# Livestock Fencing

- Restricting livestock from watercourses to stabilize stream banks
- 75–100% grant up to \$5,000





# Livestock Fencing



**2002**

**2019**



# Erosion Control Structures

**Erosion control structures to keep sediment and nutrients in fields.  
50% grant up to \$5,000**



# Wetland Creation

- objective is to hold water on the landscape
- allow sediment and nutrients to settle out



# Wetland Creation

- berms or dugouts that catch and store surface runoff from fields
- 50% grant up to \$5,000



# Cover Crops



- cover crops protect soil from water and wind erosion during the non-growing season
- Must leave minimum 50% residue over winter

- \$40/acre, maximum \$1,600 per applicant.
- **If cover crop is grazed or harvested, \$20/ac to max \$1,600**

# Clean Water Diversion



- directing clean water away from livestock yards and manure storage areas reduces manure runoff  
**50% grant up to \$3,000**

# Nutrient Management Planning

- Promotes efficient application of nutrients to cropland
- Defines how manure is stored and where, when and what rate nutrients are applied
- 75-100% up to \$2,000



# New: Crop Nutrient Planning

- Promote efficient application of nutrients to cropland
- Similar to NMPs but for cash crop operations
- Encouraging more soil testing and fertility planning by CCAs
- 75-% up to \$2,000





# Plugging Water Wells



- Unused wells should be properly plugged
- 100% grant up to \$1,000 per well

# Well Upgrades



- Bringing wells up to current standards
- 80% grant up to \$1,000

# Machinery crossing improvements



- Reducing the impact of **existing** machinery crossing areas on water quality
- **50% grant up to \$3,000**

# Dufferin Living Snow Fence Program



- 100% of the cost of trees and planting
- Incentive of \$2750/acre
- **17.4** km of living snow fence established\* along priority county roads

\*since 2012

# Dufferin Living Snow Fence Program



YouTube CA Search

**Scott Martin**  
Operations Manager, Dufferin County

Living snow fences on the landscape

Grand River Conservation Authority

Subscribe 571

680 views

The image shows a YouTube video player interface. At the top, there is a search bar with the YouTube logo and a search icon. The video content features a man in a bright yellow safety jacket with 'COUNTY OF DUFFERIN' on the chest, standing in a snowy landscape with bare trees in the background. Below the video, the name 'Scott Martin' and title 'Operations Manager, Dufferin County' are displayed. The video title is 'Living snow fences on the landscape'. The channel name is 'Grand River Conservation Authority' with a 'Subscribe' button showing 571 subscribers. The view count is 680 views. The video player controls at the bottom show a progress bar at 0:38 / 3:29 and various icons for play, volume, and settings.

[www.youtube.com/GRCAvideos](http://www.youtube.com/GRCAvideos)

# Next steps for Dufferin RWQP

- Current delivery agreement expires at end of 2022
- Expecting to conduct a full review of program guidelines in 2022
- Opportunities for alignment with Dufferin County's Climate Action Plan?

# For RWQP guidelines and application forms, please contact your local conservation authority:

Conservation Authority	Telephone enquiries	email
Credit Valley	(905) 670-1615 ext. 720	<a href="mailto:mark.eastman@cvc.ca">mark.eastman@cvc.ca</a>
Grand River	(519)-621-2761	<a href="mailto:ruralwater@grandriver.ca">ruralwater@grandriver.ca</a>
Nottawasaga Valley	(705) 812-4781	<a href="mailto:sstephens@nvca.on.ca">sstephens@nvca.on.ca</a>
Saugeen Valley	519-367-3040 Ext. 226	<a href="mailto:stewardship@svca.on.ca">stewardship@svca.on.ca</a>
Toronto & Region	<a href="tel:(416)661-6600">(416) 661-6600</a> ext. 5915	<a href="mailto:patrick.esson@trca.ca">patrick.esson@trca.ca</a>

# Thank you!



**Anne Loeffler, Conservation Specialist**

**@anne\_loeffler**

**[aloeffler@grandriver.ca](mailto:aloeffler@grandriver.ca) cell 519-239-7282**



# Questions?

